

# Oncology Clinical Pathways

## Vestibular Schwannoma

---

July 2024 – V1.2024



Choose **VA**



**SHOULDER to SHOULDER**  
Every Step of the Way

**VA**



U.S. Department  
of Veterans Affairs

# Table of Contents

<a href="#">Presumptive Conditions</a> .....	3
<a href="#">Initial Evaluation</a> .....	4



# Vestibular Schwannoma – Presumptive Conditions

VA automatically presumes that certain disabilities were caused by military service. This is because of the unique circumstances of a specific Veteran's military service. If a presumed condition is diagnosed in a Veteran within a certain group, they can be awarded disability compensation.

- Vestibular Schwannoma is currently not a presumptive condition

For more information, please visit [U.S. Department of Veterans Affairs - Presumptive Disability Benefits \(va.gov\)](https://www.va.gov/presumptive-disability-benefits/)



Choose **VA**



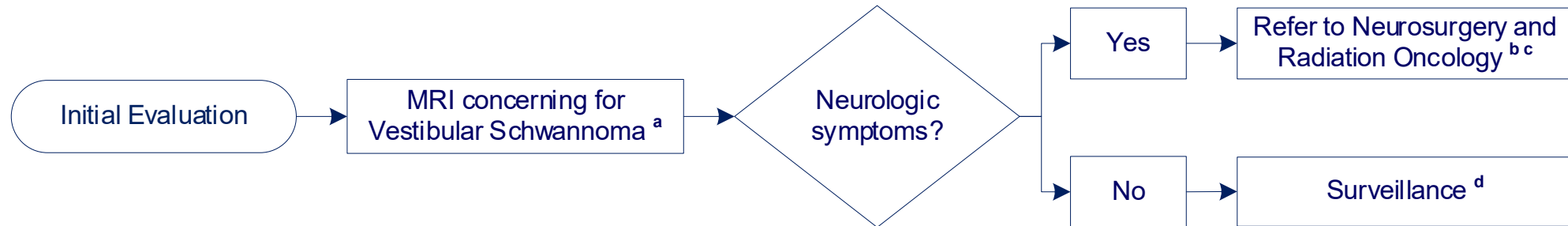
**SHOULDER to SHOULDER**  
Every Step of the Way

**VA**



U.S. Department  
of Veterans Affairs

# Vestibular Schwannoma – Initial Evaluation



Clinical trial(s) always considered on pathway. For assistance finding a clinical trial, email [CancerClinicalTrialsNavigation@va.gov](mailto:CancerClinicalTrialsNavigation@va.gov).

<sup>a</sup> **Bilateral NF2-related Schwannomatosis** refer to Neuro-oncology through National TeleOncology consult.

<sup>b</sup> **Referral** to Otolaryngology may be appropriate

<sup>c</sup> **Multidisciplinary Discussion** through local tumor board or National TeleOncology CNS Virtual Tumor Board

<sup>d</sup> **Surveillance** including annual audiometry and brain MRI (with internal auditory canals) for 10 years and then every 3-5 years; if changes are seen, refer to Neurosurgery and Radiation Oncology

**NF2** Neurofibromatosis type 2