

Oncology Clinical Pathways

Vestibular Schwannoma

July 2024 – V1.2024



Choose **VA**



SHOULDER to SHOULDER
Every Step of the Way

VA



U.S. Department
of Veterans Affairs

Table of Contents

Presumptive Conditions	3
Initial Evaluation	4



Vestibular Schwannoma – Presumptive Conditions

VA automatically presumes that certain disabilities were caused by military service. This is because of the unique circumstances of a specific Veteran's military service. If a presumed condition is diagnosed in a Veteran within a certain group, they can be awarded disability compensation.

- Vestibular Schwannoma is currently not a presumptive condition

For more information, please visit [U.S. Department of Veterans Affairs - Presumptive Disability Benefits \(va.gov\)](https://www.va.gov/presumptive-disability-benefits/)



Choose **VA**



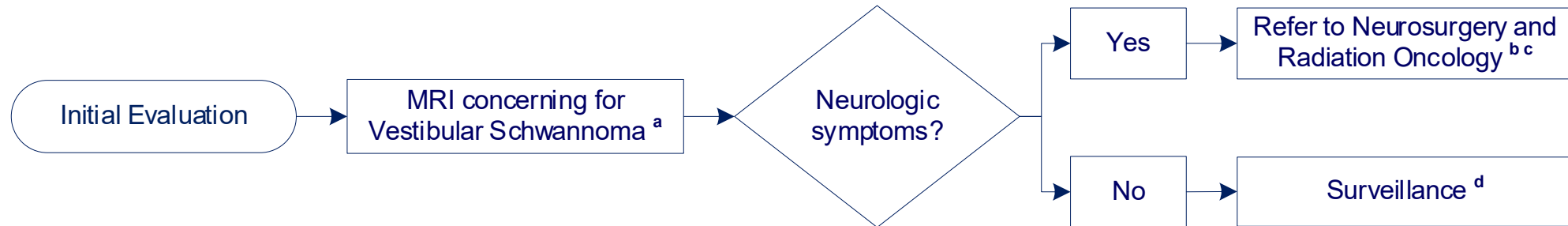
SHOULDER to SHOULDER
Every Step of the Way

VA



U.S. Department
of Veterans Affairs

Vestibular Schwannoma – Initial Evaluation



Clinical trial(s) always considered on pathway. For assistance finding a clinical trial, email CancerClinicalTrialsNavigation@va.gov.

^a **Bilateral NF2-related Schwannomatosis** refer to Neuro-oncology through National TeleOncology consult.

^b **Referral** to Otolaryngology may be appropriate

^c **Multidisciplinary Discussion** through local tumor board or National TeleOncology CNS Virtual Tumor Board

^d **Surveillance** including annual audiometry and brain MRI (with internal auditory canals) for 10 years and then every 3-5 years; if changes are seen, refer to Neurosurgery and Radiation Oncology

NF2 Neurofibromatosis type 2